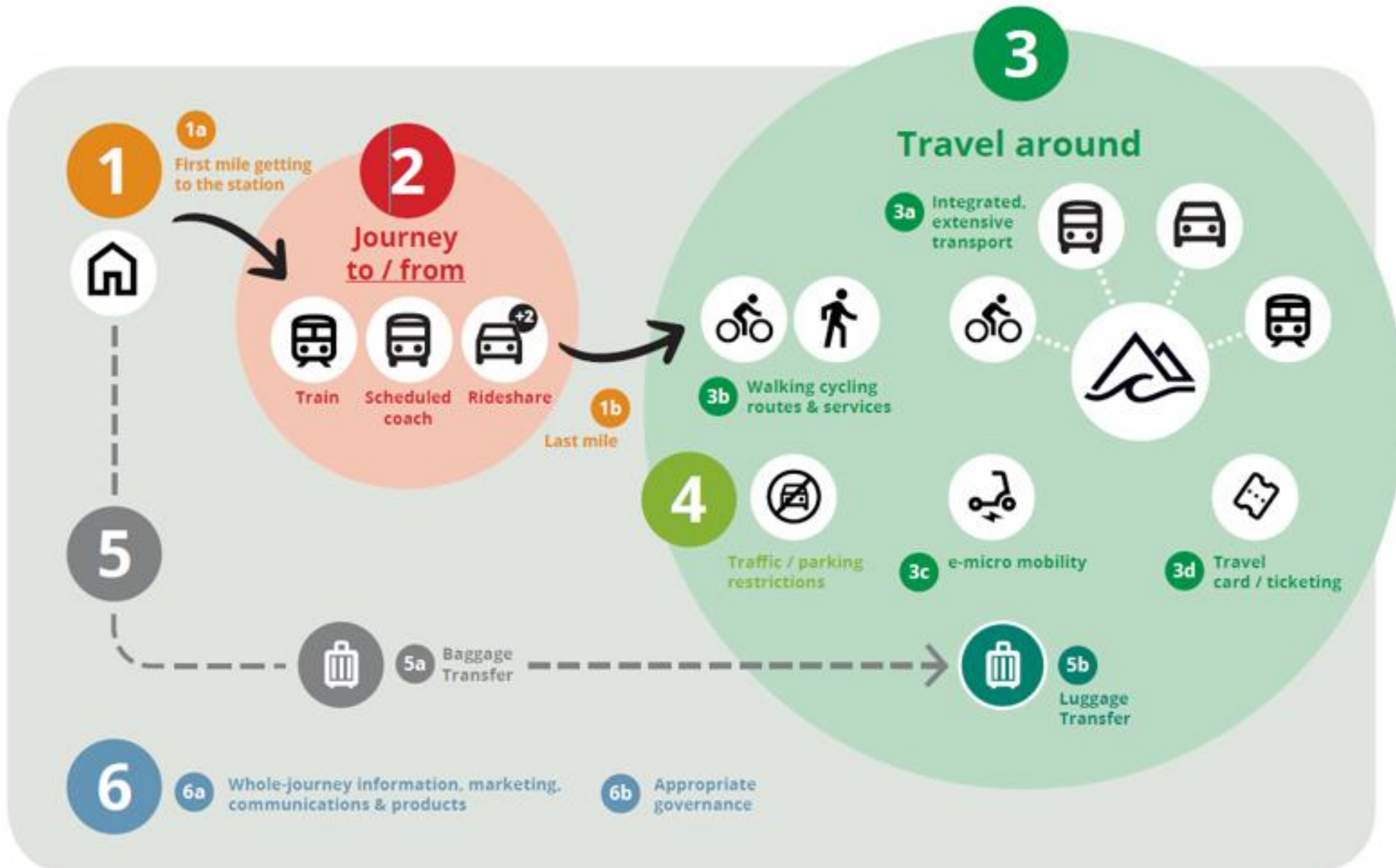


What does world class low carbon transport involve?



What might world class low carbon transport involve around here?

- These images show world-class transport
- The boxes split “transport” down into simpler chunks with some prompts to get you thinking
- Grab a pen and scribble away! Disagree with something? Explain why...



Visp rail interchange, Switzerland



“Cheek-to-cheek” rail bus interchange, Seefeld, Austria



Swiss rail carriages: bikes, play areas, café, workspaces



Low cost scheduled coach travel to Grange / Cartmel?

Getting here & away

By train

- **Stations:**

What improvements required?

- **Trains:**

Design & on-board facilities?

- **Services:**

Where from/to? Early/late?

By scheduled coach services

Low cost, longer distance travel

- **Services:**

Where from/to? Timings? Capacity?

- **Markets & vehicles:**

Just for young people?

Rideshare

For groups of like-minded people

Who might like to share lifts?

Events? Holidays? Longer commutes?



Extensive, inter-connecting routes - Austria



Widening attractiveness of services?



Rural late-night buses (Devon)?



Getting around locally: public transport

Scheduled buses

- **Routes**
Where from/to? How often & when?
- **Vehicles**
Type, size
- **Accessibility**
Limited mobility, push/wheel chairs, bikes etc

Demand-responsive services / taxi-buses

- **Routes/zones/times?**
- **How they relate to scheduled buses**
Earlier/later?
Connecting-in more remote places?

Taxis

- **Based where?**
- **What might “rural Uber” look like?**

“Total Transport”

- **Sharing of vehicles & services between public, health, schools etc**

Ticketing?

- **Annual pass? Integrated tickets?**

Getting around: walking, cycling, wheeled



Extensive safe, connected routes in rural destination



Traffic restrictions to provide safe, attractive places (Switzerland)



Vibrancy in traffic-restricted Zermatt (Switzerland)

• Routes

Where from/to? How often & when?

• Other infrastructure & changes

Road crossings?

Signage?

• Traffic-restricted villages / neighbourhoods / routes?

Appropriate idea for around here?

Where?

• Services

Bike maintenance

Guiding & buddying

Advice and information

Bike/ebike/wheeled rental

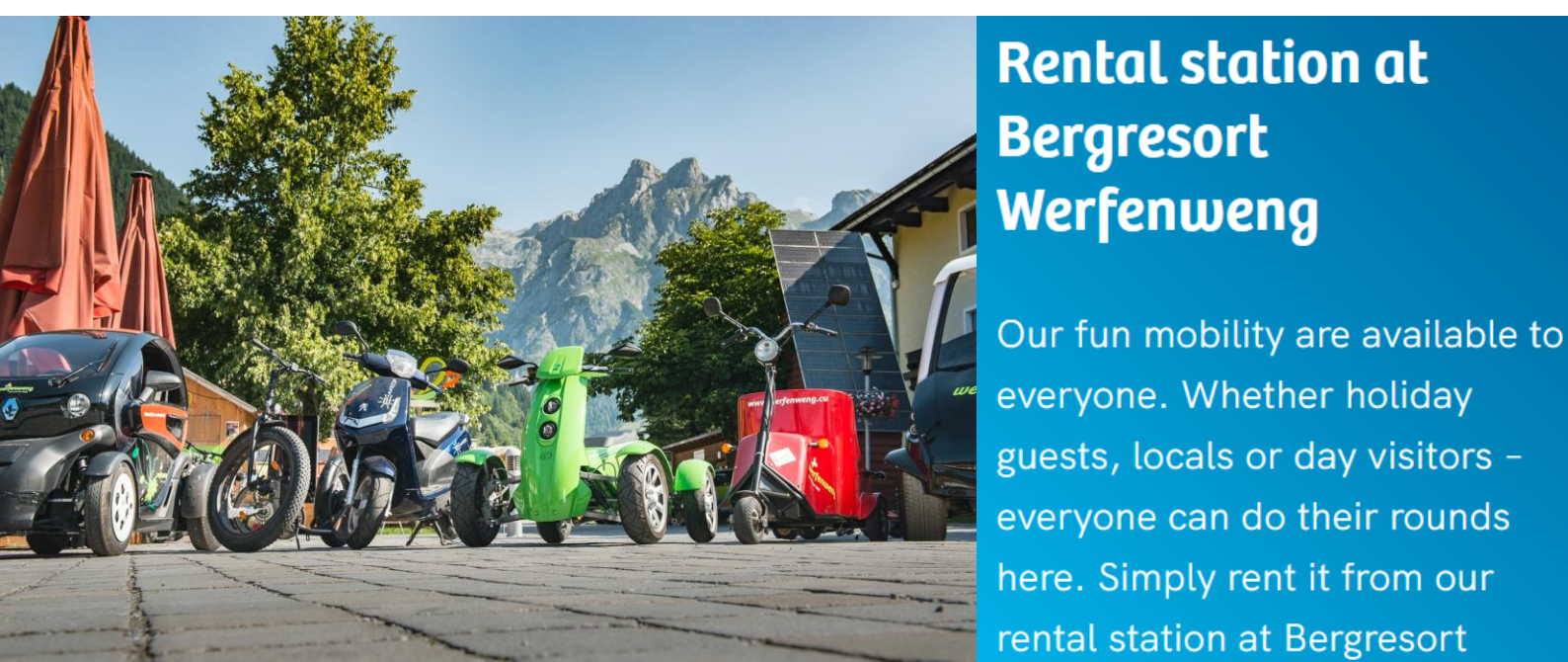
Getting around: **shared transport**



Community Pay-As-You-Go shared EVs



PAYG ebikes: Scottish Highlands & Staveley



Car clubs / carsharing

- *Located where?*
- *+ rental?*
- *EVs?*

Bikes / ebikes

- *Rental, loans, on-street bikeshare*
- *Located where?*
- *Try before you buy?*

E-micromobility

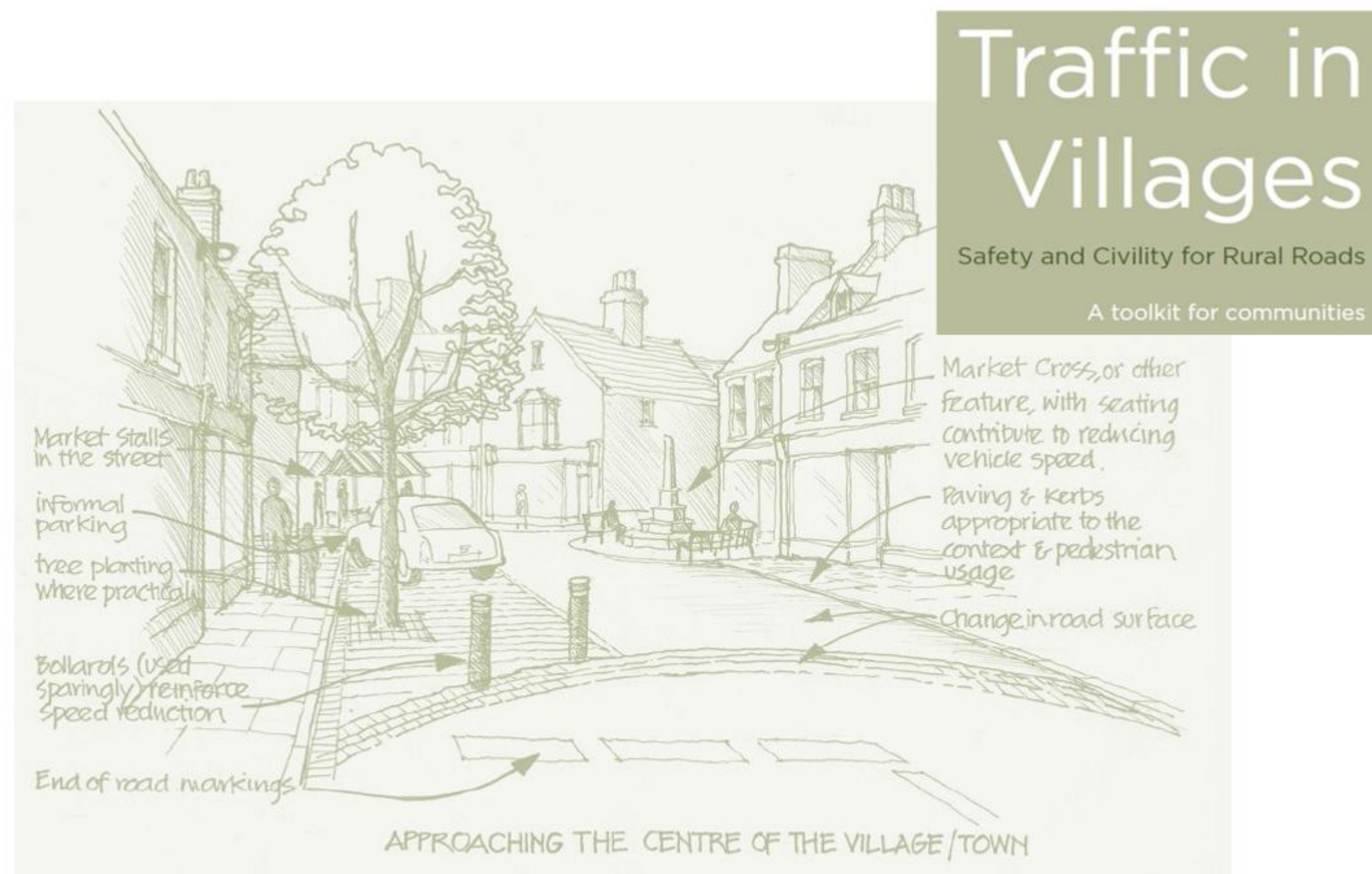
E-trikes, e-quads, Trampers etc

- *Located where?*
- *Loans, rental, PAYG*
- *Try before you buy?*

Ride sharing

- *What sort of people or groups?*
- *What journeys?*

Mobility hubs, streetscapes & parking



How could streets be redesigned?

- What might low carbon streets, roads and public places look like?
- Station forecourts? Village centres? Residential streets? Lanes?
- How should car parking be managed?



Mobility hubs

Rail/bus interchanges, bus stops / bikeshare outside shops ...

- Where do people want to access transport locally?
- What should be there (bus / bike; seating; information; wifi; café...)

Case Study Loch Ness tourist hub



'A community asset'